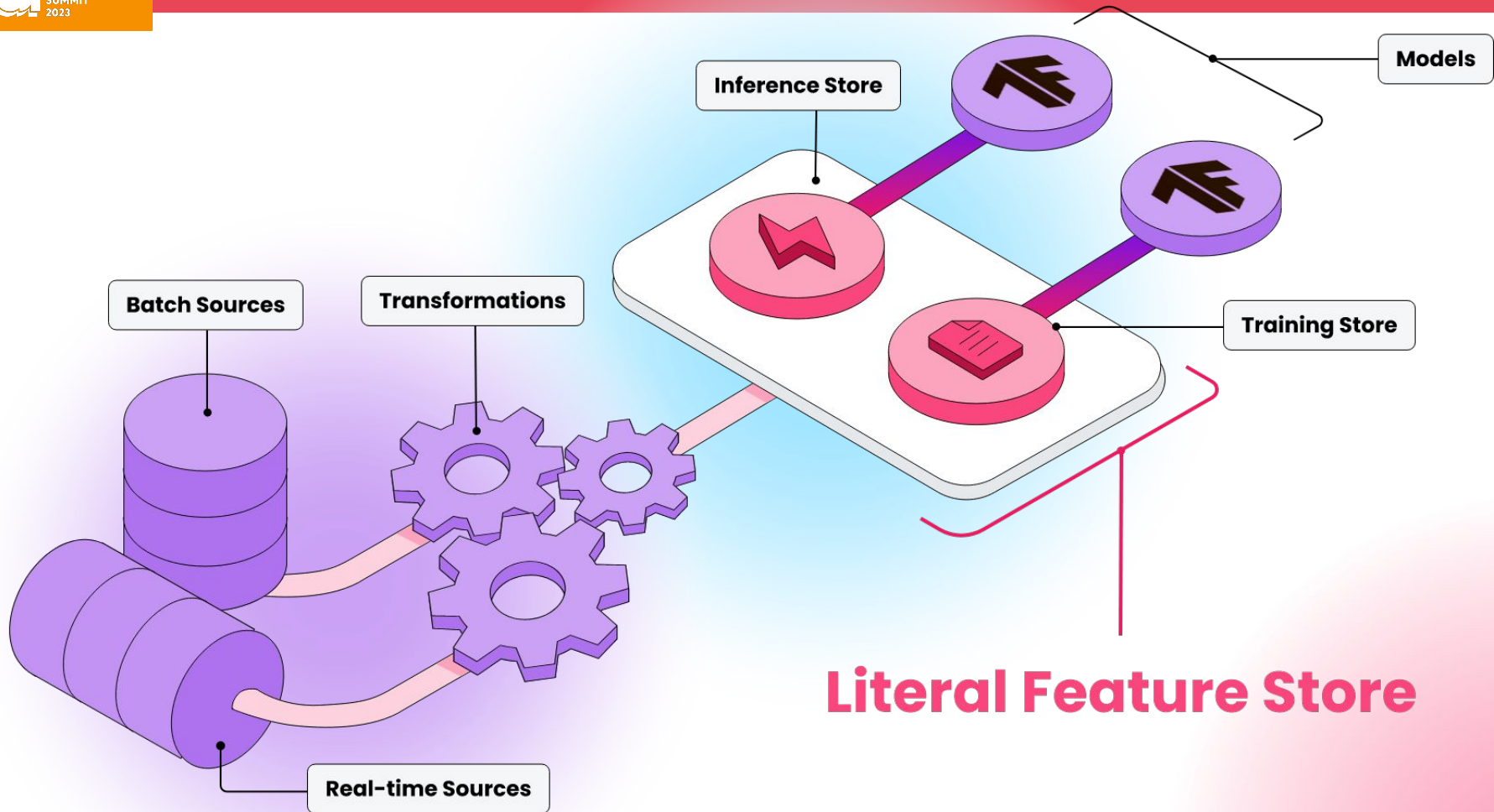


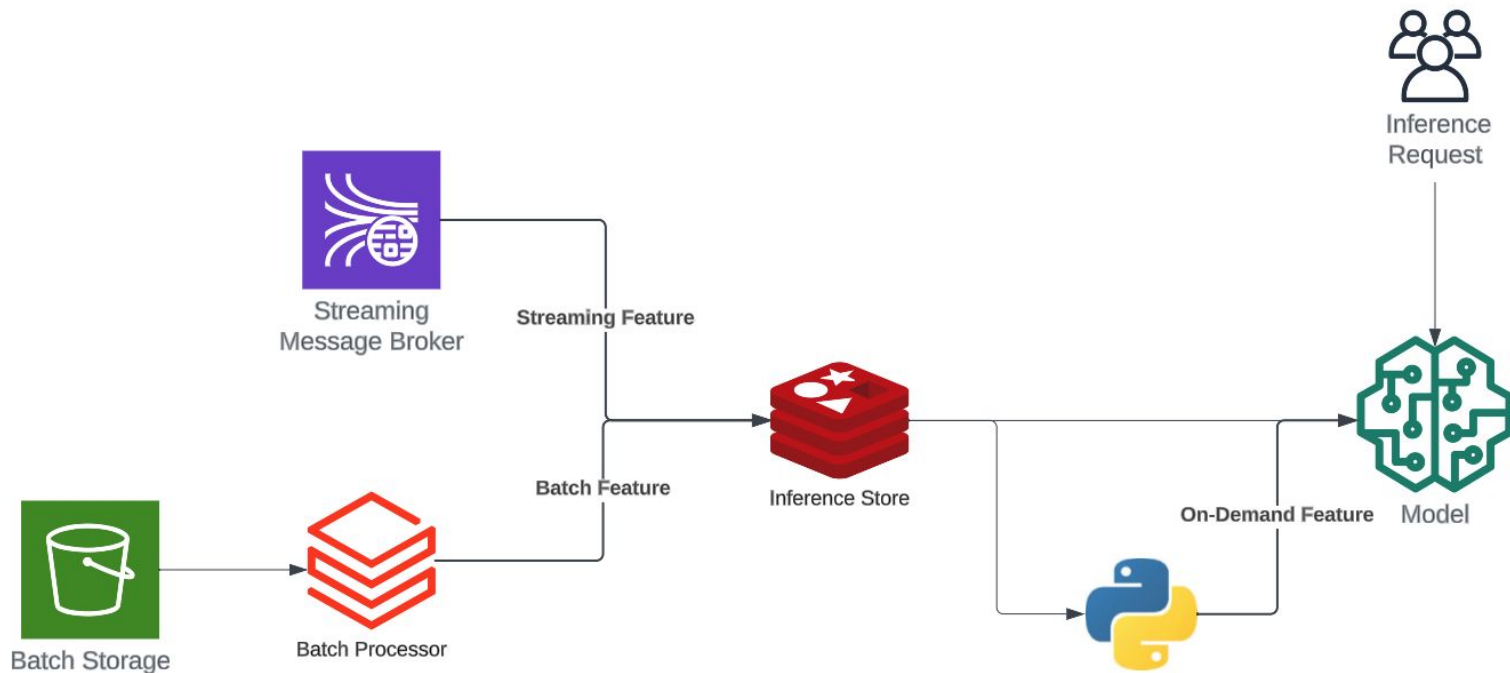
Feature Store \neq Storage

Simba Khadder, CEO, Featureform

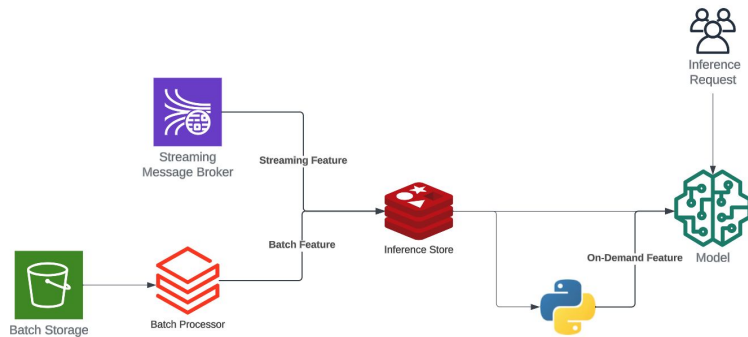
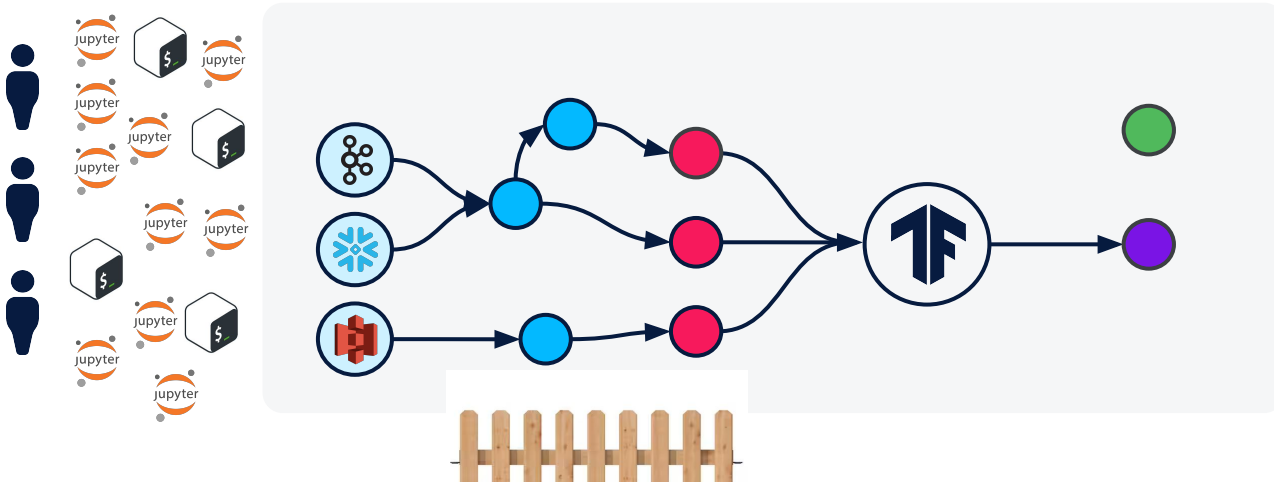


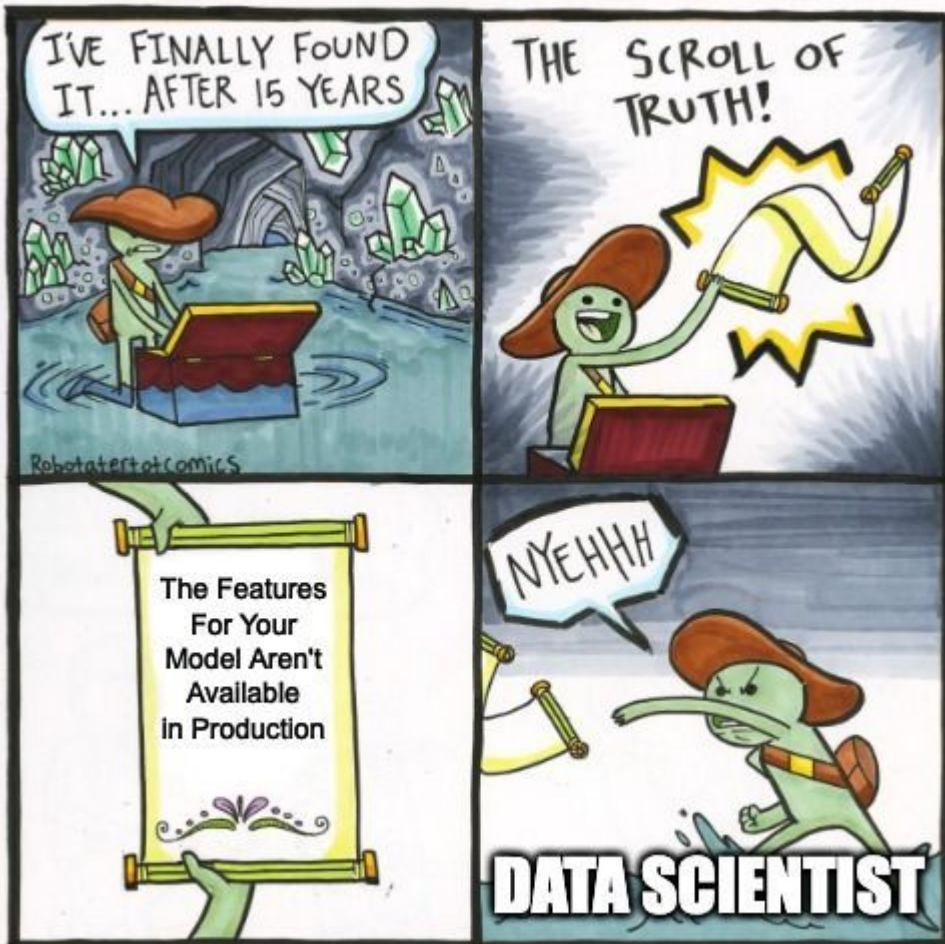
Literal Feature Store

Production Features



Getting Features into production





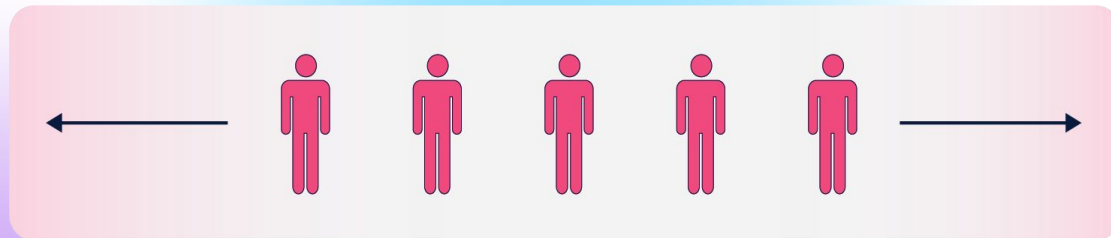
Robotartofcomics

imgflip.com

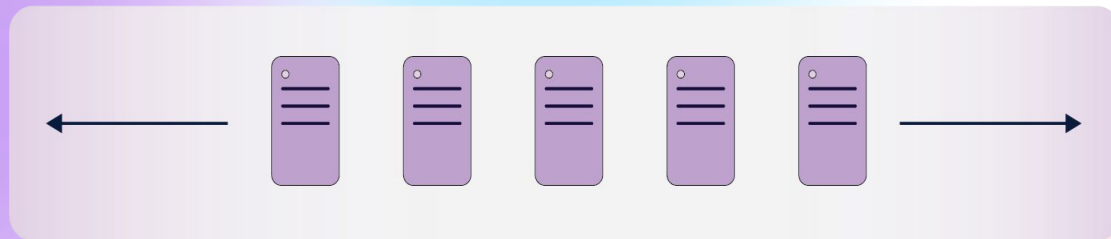


The Data Science Workflow has no Structure

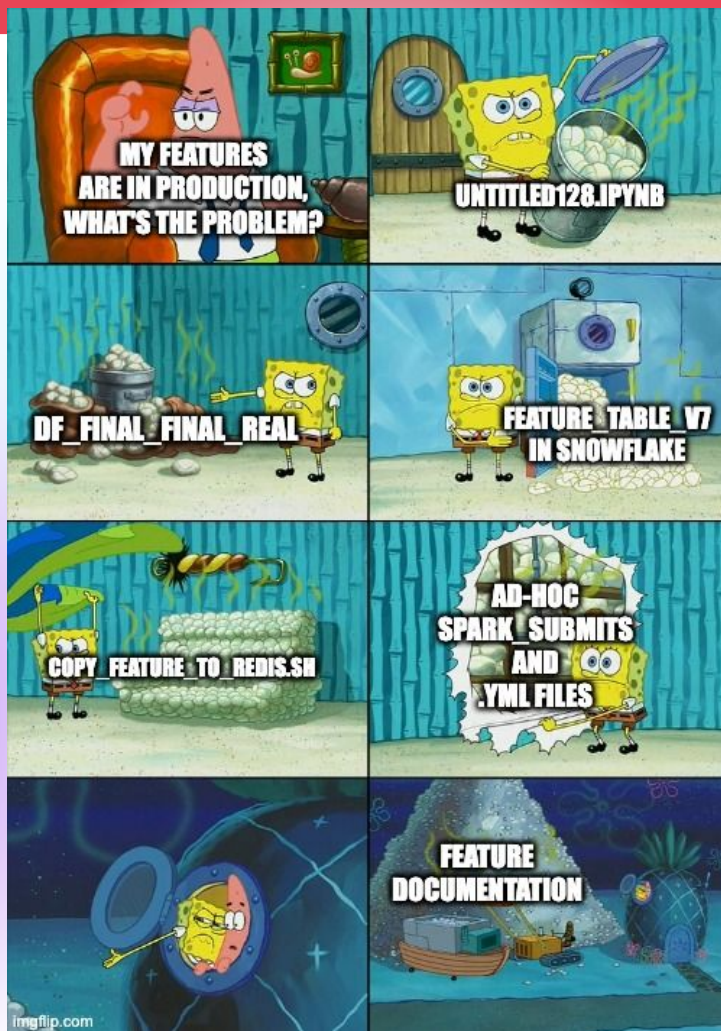
Workflow



Data Processing



Traditional Feature Stores don't solve this





And they don't solve this

Find database objects

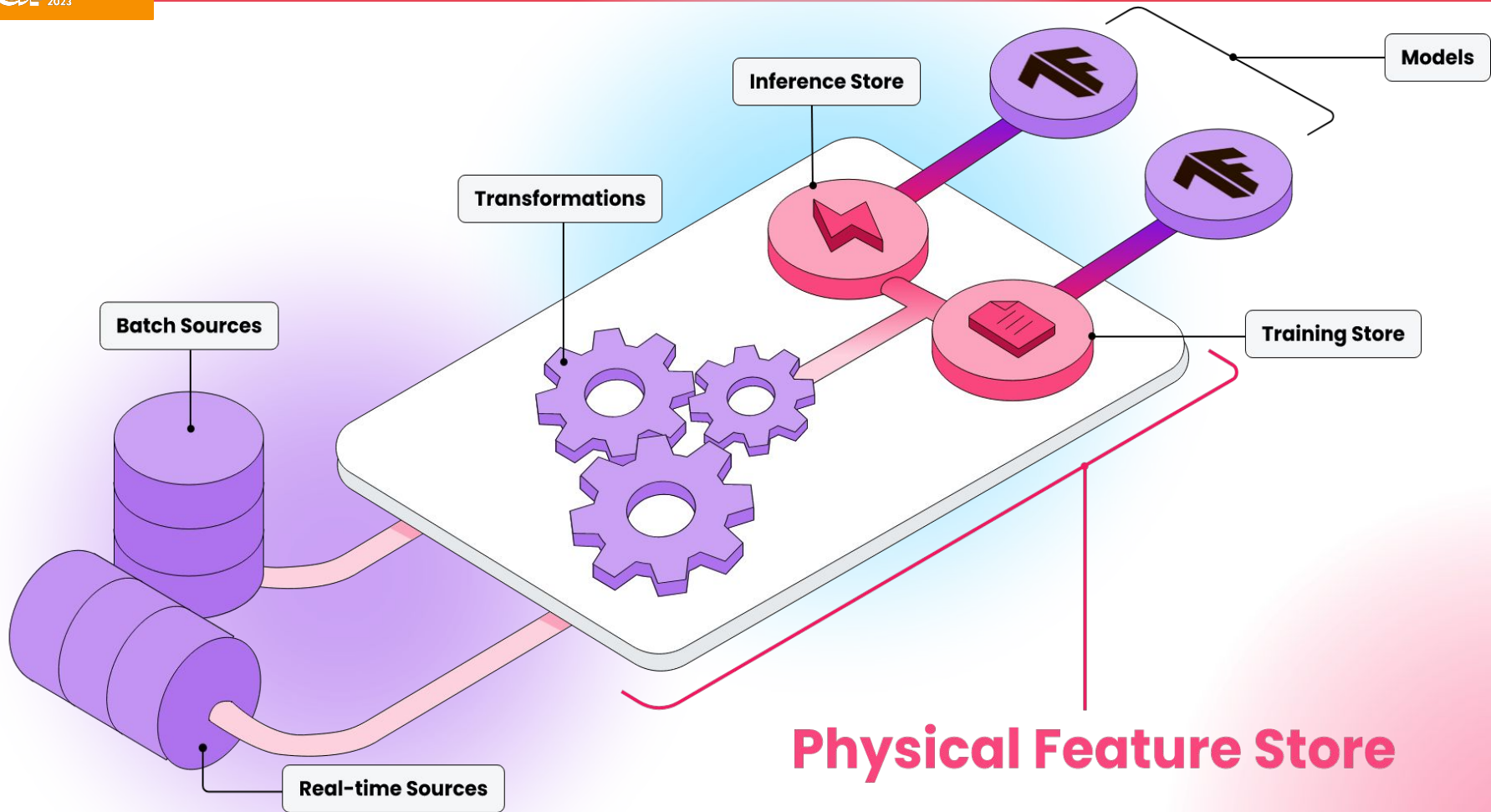


Starting with...

PRODUCTION

▼ Tables

- NEW_V2
- NEW_V2_JAKE_FINAL
- NEW_V2_DO_NOT_TOUCH
- NEW_V3_TEST
- NEW_V53_NOT_SURE
- NEW_V2_MODIFIED
- NEW_V4_MODIFIED_TODAY
- NEW_IM_NOT_SURE
- NEW_MIGHT_BE_OLD
- NEW_NOT_THAT_OLD
- NEW



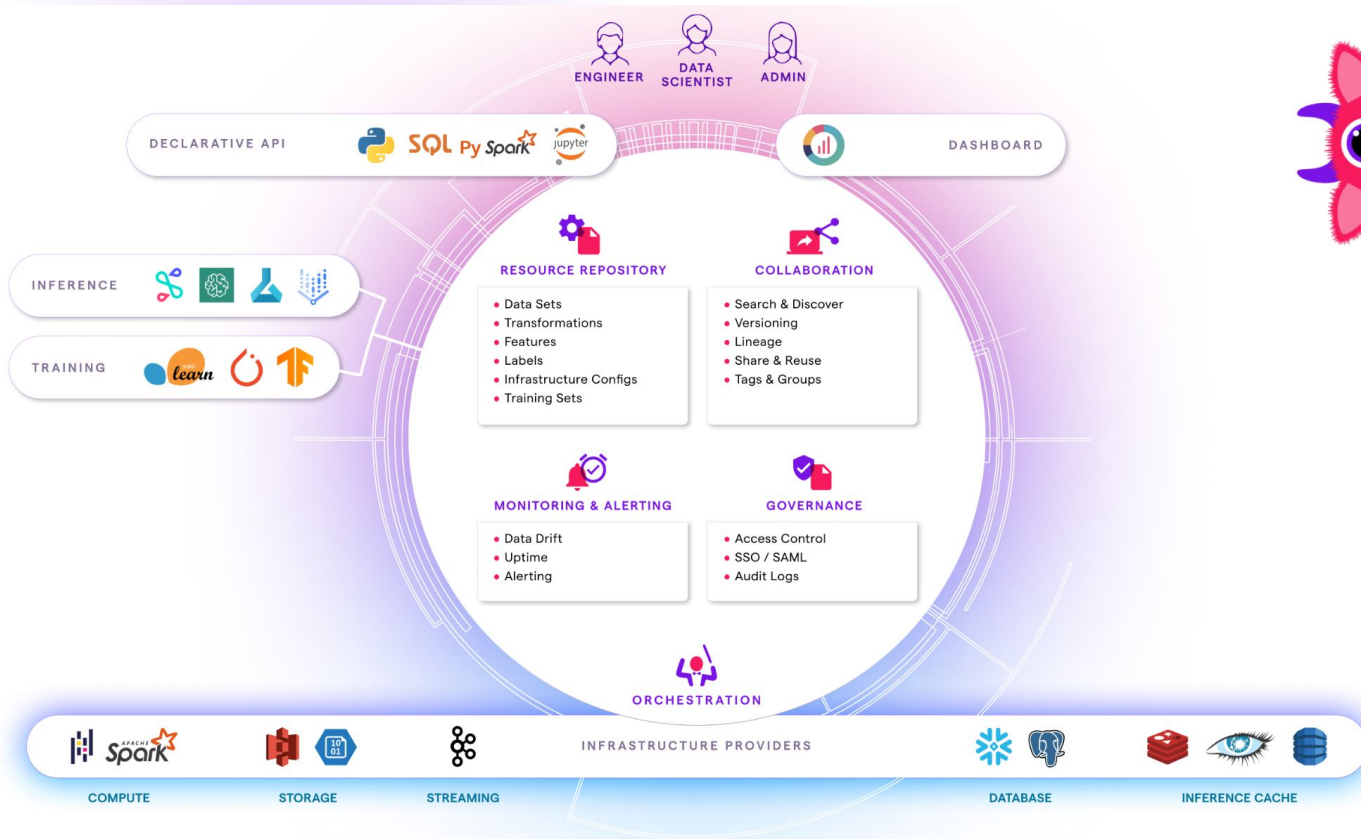
Physical Feature Store



The wrong puzzle piece

- Redis/Spark/Etc. are fast enough and standard
- Not EVERYTHING has to be streaming
- Having one place to store pre-computed features creates a whole other set of problems

Featureform's **Virtual** Feature Store approach



Q&A